



higher education  
& training

Department:  
Higher Education and Training  
REPUBLIC OF SOUTH AFRICA

Ingwe TVET College



# INGWE TVET COLLEGE **PROSPECTUS**

## VISION

A World Class institution of learning, training and development

## MISSION

Providing diverse quality technical vocational education and training responsive to the needs of our economy

## VALUES

Accountability  
Commitment  
Efficiency  
Integrity and honesty  
Responsiveness  
Ubuntu



Ingwe TVET College is central to skills development requirements of the Eastern Cape and significantly contributes to the training of a skilled workforce. We strive to be flexible in our programme offerings that they meet the needs of surrounding communities. Our programmes are affordable, cost effective and provide an alternative to general education and training programmes at schools and other Higher Education institutions. Our courses are affordable. We offer vocational programmes, Learnerships and skills courses. Our workshops are well equipped. At Ingwe TVET College we offer National Certificate Vocational (NCV) and Report 191 (Nated)



## WHAT IS THE DIFFERENCE BETWEEN NCV AND REPORT 191 NATED?

### NATIONAL CERTIFICATE VOCATIONAL (NCV)

- ✓ The NCV consists of three consecutive qualifications on NQF Levels 2, 3 and 4.
- ✓ Each level is a full qualification and takes one academic year to complete when studying full time.
- ✓ A student, who wishes to do the NC(V) part time, can take up to 3 years to complete each level.
- ✓ The NC(V) qualification is offered in 17 different vocational programmes, each specializing in a particular field of study.
- ✓ Each NC(V) level is made up of 3 fundamental subjects (a language, Life Orientation and Mathematics or Mathematical literacy), 3 compulsory vocational subjects in the particular field of study and one optional subject, which focuses on specialization in a particular occupation.

### REPORT 191 (NATED)

- ✓ The NATED programmes refers to the report 191, N1 to N6, offering that were developed for what was previously known as technical colleges.
- ✓ A student who has achieved a N2 certificate in engineering studies, and who has proof of 2 years work experience in the same field as the subjects on the N2 certificate, can apply to take a trade test to qualify as an artisan.
- ✓ The only other qualification that is achieved through the Report 191 system is the National N-Diploma, which is currently issued by the DHET after successful completion of N6 plus 18 months work experience for Business Studies and 2 years for Engineering Studies, in the same field as the subjects on the N6-certificate.

### THE NATIONAL CERTIFICATE VOCATIONAL NCV

The Department of Education introduced the National Certificate Vocational NCV at Public Technical and Vocational Education and Training (TVET) Colleges in 2007. The NCV offers programmes of study in a variety of skills demands of the South African economy.

The National Certificate Vocational is offered at Levels 2, 3 and 4 of the National Qualifications Framework (NQF). The qualification is designed to provide both theory and practical experience in a particular vocational field. The practical component of the study may be offered in the workplace or in a simulated workplace environment. Students have the opportunity to experience work situations during the period of study.

Ingwe TVET College offers 8 NCV programmes.

### THE STRUCTURE AND COMBINATION OF SUBJECTS FOR NC (V)

The structure and combination of subjects is applicable at every level of study of the qualification, i.e. Level 2, 3 and 4

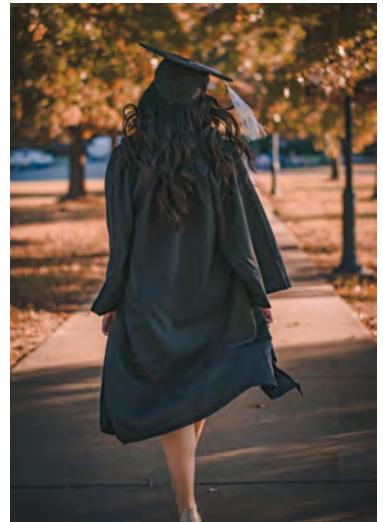
#### SUBJECTS

Three compulsory subjects:

Language: This must be one of the official languages of South Africa and should be offered as a language of teaching and learning; Mathematics or Mathematical Literacy; and Life Orientation.

Four vocational subjects:

These are subjects from the sub-field organization of the NQF (see the list).



### SUB-FIELD PROGRAMMES OFFERED IN THE QUALIFICATION

The subject combinations in each of these programmes provide a high degree of specialization for a particular economic sector.

It is important to note that of the vocational subjects, one subject may be chosen from any vocational programmes to provide the student with either high levels of specialization, or the opportunity for broader training.



# NCV

## ENGINEERING PROGRAMMES

## WHAT IS THE NATIONAL CERTIFICATE: ENGINEERING & RELATED DESIGN PROGRAMME?

The National Certificate Engineering & Related Design is a programme at each of level 2, 3 and 4 of the NQF. This programme is designed to provide to both the theory and practice of Engineering and Related Design. The practical component of study will be offered in a real workplace or in a simulated workplace environment. It will provide students with an opportunity to experience work situations during the period of study

## WHAT ARE THE MINIMUM ENTRY REQUIREMENTS TO THE PROGRAMME?

For entry into the National Certificate Engineering & Related Design at NQF Level 2, you require:

- A year end school report for Grade 9, 10, 11 or 12 certificate; or
- An NQF Level 1 qualification; or
- An approved bridging programme design for the specific purpose to access NQF Level 2; or
- A recognition of prior Learning (RPL) assessment to meet the basic requirements for access to NQF Level 2

## HOW LONG IS THE QUALIFICATION?

The National Certificate Engineering & Related Design programme is a full year programme at each of the NQF Levels of study. A student is issued with a certificate on the successful completion of study that is Level 2, 3 and 4.

## WHICH SUBJECTS MAKE UP A NATIONAL CERTIFICATE ENGINEERING & RELATED DESIGN?

In order to obtain a National Certificate Engineering & Related Design, a student is required to take a total of 7 subjects. These include 3 fundamental subjects and 4 vocational subjects.

## WHICH ARE THE FUNDAMENTAL SUBJECTS?

The 3 fundamental subjects are:

- First additional language – which must be the language of teaching and learning;
- Mathematics or Mathematical literacy; and
- Life Orientation

## WHAT ARE THE VOCATIONAL SUBJECTS IN ENGINEERING & RELATED DESIGN?

The vocational subjects include:

- Engineering Fundamentals
- Engineering Practice and Maintenance
- Engineering Processes and Technology
- Engineering Technology
- Materials Technology
- Professional Engineering Practice
- Engineering System, Graphic and Design
- Applied Engineering Technology
- Fitting and Turning
- Engineering Fabrication (Biologymaking, Sheet Metal Work)
- Automotive Repair and Maintenance
- Welding
- Refrigeration & Air-Conditioning

## CAREER OPPORTUNITIES

- Car Manufacturing
- Panel beating
- Mechanical Engineering
- Welding
- Tool making
- Automotive repairing
- Motor Mechanics

## OFFERED AT

- Mount Frere
- Ngqungqushu



## WHAT IS THE NATIONAL CERTIFICATE ELECTRICAL INFRASTRUCTURE CONSTRUCTION PROGRAMME?

The National Certificate Electrical Infrastructure Construction is a programme at each of levels 2, 3 and 4 of the NQF. This programme is designed to provide both the theory and practical of electrical infrastructure construction. The practical component of study may be offered in a real workplace or in a simulated workplace environment. It will provide students with an opportunity to experience workplace situation during the period of study

## WHAT ARE THE MINIMUM ENTRY REQUIREMENTS TO THE PROGRAMME?

For entry into the National Certificate Electrical Infrastructure Construction at NQF Level 2, you require:

- A year end school report grade 9, 10, 11 or 12 certificate; or
- An NQF Level 1 qualification; or
- An approved bridging programme designed for the specific purpose to access NQF Level 2; or
- A Recognition of prior learning (RPL) assessment to meet the basic requirements for access to NQF Level 2.

## HOW LONG IS THE QUALIFICATION?

The National Certificate Electrical Infrastructure Construction programme is a full year programme at each of the NQF Levels of study. A student is issued with a certificate on the successful completion of each level of study that is level 2, 3 and 4.

## WHICH SUBJECT MAKE UP A NATIONAL CERTIFICATE ELECTRICAL INFRASTRUCTURE CONSTRUCTION?

In order to obtain a National Certificate Electric Infrastructure Construction, a student is required to take a total of 7 subjects. This includes 3 fundamental subjects and 4 vocational subjects.

## WHICH ARE THE FUNDAMENTAL SUBJECTS?

The 3 fundamental subjects are:

- First additional language-which must be the language of teaching and learning;
- Mathematics or Mathematical literacy; and
- Life Orientation

## WHAT ARE THE VOCATIONAL SUBJECTS IN ELECTRICAL INFRASTRUCTURE CONSTRUCTION?

The vocational subjects in Electrical Infrastructure Construction include:

- Electrical principles and Practice
- Electronic Control and Digital Electronics
- Electrical workmanship
- Electrical System and Construction
- Material Technology
- Professional Engineering Practice
- Engineering system, Graphic and Design
- Applied Engineering Technology
- Flitting and Turning
- Engineering Fabrication (Boilermaking, Sheet Metal Work)
- Automotive Repair and Maintenance
- Welding
- Refrigeration & Air conditioning

## CAREER OPPORTUNITIES

- Electrical Engineering
- Industrial Engineering
- Sound Technology
- Theatre Technology
- Digital Electronics

## OFFERED AT

- Site to
- Ngqungqushu

**WHAT IS THE NATIONAL CERTIFICATE CIVIL ENGINEERING AND BUILDING CONSTRUCTION PROGRAMME?**

The National Certificate Civil Engineering and Building Construction is a programme at each of levels 2, 3 and 4 of the NQF. This programme is designed to provide both the theory and practice of Civil Engineering and Building Construction. The practical component of study will be offered in a real workplace or in a simulated workplace environment. It will provide student with an opportunity to experience work situation during the period of study

**WHAT ARE THE MINIMUM ENTRY REQUIREMENTS TO THE PROGRAMME?**

For entry into the National Certificate Civil Engineering and Building Construction at NQF level 2, require:

- A year end school report for Grade 9,10,11 or 12 certificate; or
- An NQF Level 1 qualification, or
- An approved bridging programme designed for the specific purpose to access NQF Level 2; or
- A Recognition Prior Learning (RPL) assessment to meet the basic requirement for access to NQF Level 2

**HOW LONG IS THE QUALIFICATION?**

The National Certificate Civil Engineering and Building Construction programme is a full year programme at each of the NQF Levels of study. A student is issued with a certificate on the successful completion of study that is Level 2, 3 and 4

**WHICH SUBJECT MAKE UP A NATIONAL CERTIFICATE CIVIL ENGINEERING AND BUILDING CONSTRUCTION**

In order to obtain a National Certificate Civil Engineering and Building Construction, a student is required to take a total of 7 subjects. These include 3 fundamental subjects and 4 vocational subjects.

**WHICH ARE THE FUNDAMENTAL SUBJECTS?**

The 3 fundamental subjects are:

- First additional language –which must be the language of teaching and learning
- Mathematics or Mathematical literacy ;and
- Life Orientation

**WHAT ARE THE VOCATIONAL SUBJECTS IN CIVIL ENGINEERING AND BUILDING CONSTRUCTION?**

In order to obtain a National Certificate Civil and Building Construction, a student is required to take a total of 7 subjects. These include 3 Fundamental subjects and 4 vocational subjects.

**WHICH ARE THE FUNDAMENTAL SUBJECTS?**

The vocational subjects in Civil Engineering and Building Construction include:

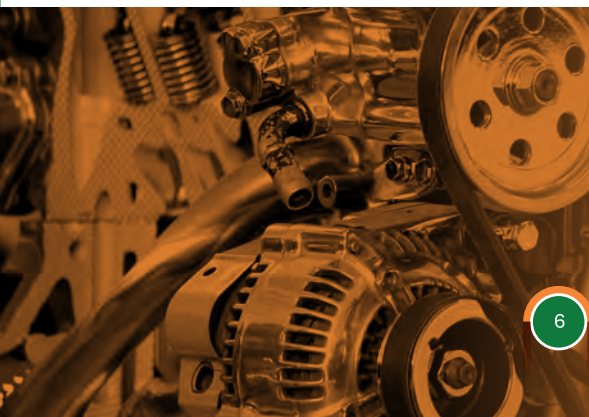
- Construction Planning
- Construction Plant and Equipment
- Construction Materials
- Construction Supervision
- Construction Carpentry and roof work
- Construction Plumbing
- Concrete Structures
- Roads
- Physical Science

**CAREER OPPORTUNITIES**

- Architectural Technology
- Drainage Inspection
- Industrial Engineering
- Quantity Surveying
- Sanitation and Reticulation
- Roads Construction
- Building Construction

**OFFERED AT**

- Siteco
- Ngqungqushu



“ PROVIDE STUDENT WITH AN OPPORTUNITY TO EXPERIENCE WORK SITUATION DURING THE PERIOD OF STUDY ”

# NATIONAL CERTIFICATE INFORMATION TECHNOLOGY & COMPUTER SCIENCE

## WHAT IS THE NATIONAL CERTIFICATE INFORMATION TECHNOLOGY AND COMPUTER SCIENCE PROGRAMME?

The National Certificate Information Technology and Computer Science is a programme for programmers at each of Level 2, 3 and 4 and of the NQF. This programme is designed to provide both the theory and practice of Information Technology and Computer Science. The practice component of study may be offered in a real workplace or in a stimulated workplace environment. It will provide student with an opportunity to experience work situations during the period of study.

## WHAT ARE THE MINIMUM ENTRY REQUIREMENTS TO THE PROGRAMME?

For entry in to National Certificate Information Technology and Computer Science at NQF Level 2, you require:

- A year end school report for Grade 9, 10, 11 or 12 certificate; or
- An NQF Level 1 qualification; or
- An approval bridging programme designed for the purpose to access NQF Level 2; or
- A Recognition of prior learning (RLP) assessment to meet the basic requirements for access to NQF Level 2.

## HOW LONG IS THE QUALIFICATION?

The National Certificate Information Technology and Computer Science programme is a full year programme at each of the NQF levels of study. A student is issued with a certificate on the successful completion of each level of study that is Level 2, Level 3 and Level 4

## WHICH SUBJECTS MAKE UP A NATIONAL CERTIFICATE INFORMATION TECHNOLOGY AND COMPUTER SCIENCE?

In order to obtain a National Certificate Information Technology and Computer Science, a student is required to take of total of 7 subjects. These include 3 fundamental subjects and 4 vocational subjects.

## WHICH ARE THE FUNDAMENTAL SUBJECTS?

- First additional language- which must be the language of teaching and learning;
- Mathematics or Mathematical literacy; and
- Life Orientation

## WHAT ARE THE VOCATIONAL SUBJECTS IN INFORMATION TECHNOLOGY AND COMPUTER SCIENCE?

The vocational subjects in Information Technology and computer science:

- Information Systems
- Systems Development and Computer Programming
- Computer hardware and Software
- System Analysis and Design

## CAREER OPPORTUNITIES

- Computer programming
- Information Technology Management
- Computer Systems Engineering
- Data processing

## OFFERED AT

- Mount Fletcher



## WHAT IS THE NATIONAL CERTIFICATE OFFICE ROBOTICS?

The National Certificate Robotics is a programme at each of Level 2, 3 and 4 of the NQF. This programme is designed to provide both the theory and practice of Robotics. The practical component of the study may be offered in the workplace or in a simulated workplace environment. It will provide student with an opportunity to experience work situation during the period of study.

## WHAT ARE THE MINIMUM ENTRY REQUIREMENTS TO THE PROGRAMME?

For entry in to the National Certificate Robotics at NQF level 2, you require:

- A year end school report for Grade 9, 10, 11 and 12 Certificate; or
- An NQF level 1 qualification; or
- An approved bridging programme designed for the specific purpose to access NQF level 2; or
- A Recognition of Prior Learning (RPL) assessment to meet basic requirements for access to NQF Level 2.

## HOW LONG IS THE PROGRAMME?

The National Certificate Robotics programme is a full year programme at each of the NQF level of study. A student is issued with a certificate on the successful completion of each level of study that is level 2, 3 and 4.

## WHICH SUBJECTS MAKE UP A NATIONAL CERTIFICATE ROBOTICS?

In order to obtain a National Certificate Robotics, a student is required to take a total of 7 subjects. This include 3 fundamental subjects and 4 vocational subjects.

## WHICH ARE THE FUNDAMENTAL SUBJECTS?

The fundamental subjects are:

- First additional language –which must be the language of teaching and learning;
- Mathematics or Mathematical Literacy; and
- Life Orientation

## WHAT ARE THE VOCATIONAL SUBJECTS IN ROBOTICS?

The vocational subjects in Robotics are:

- Electronics & Digital Concepts for Robotics
- Robotics Fundamentals
- Computer Programming and Computer Literacy
- Engineering and Graphics Technology
- Engineering Graphics and Design

## CAREER OPPORTUNITIES

- IT Technician
- IT Operator/Device manager
- IT Hardware installer
- Technical Programmer

## OFFERED AT

- Maluti
- Mount Fletcher





# NCV

**BUSINESS STUDIES**  
PROGRAMMES

## WHAT IS THE NATIONAL CERTIFICATE FINANCE, ECONOMICS AND ACCOUNTING PROGRAMME?

The National Certificate Finance, Economics and Accounting is a programme of levels 2, 3 and 4 of the NQF. This programme is designed to provide both the theory and practice of Finance, Economic and Accounting. The practical component of study may be offered in a real workplace or in a simulated workplace environment. It will provide student with an opportunity to experience workplace situation during the period of study

## WHAT ARE THE MINIMUM ENTRY REQUIREMENTS TO THE PROGRAMME?

For entry into the National Certificate Finance, Economics and Accounting at NQF Level 2, you require:

- A year end school report 9, 10, 11 or 12 Certificate; or
- An NQF Level 1 Qualification; or
- An approved bridging programme designed for the specific purpose to access NQF Level 2; or
- A recognition of prior learning (RPL) assessment to meet basic requirements for access to NQF Level 2.

## HOW LONG IS THE QUALIFICATION?

The National Certificate Finance, Economics and Accounting Programme is a full year programme at each of the NQF levels of study. A student is issued with a certificate on the successful completion of each level of study that is level 2, level 3 and level 4

## WHICH SUBJECTS MAKE UP A NATIONAL CERTIFICATE FINANCE, ECONOMICS AND ACCOUNTING?

In order to obtain a National Certificate Finance, Economics and Accounting, a student is required to take a total of 7 subjects. These include 3 fundamental subjects and 4 vocational subjects.

## WHICH ARE THE FUNDAMENTAL SUBJECTS?

The 3 fundamental subjects are:

- First additional language- which must be the language of teaching and learning;
- Mathematics or Mathematical literacy; and
- Life Orientation

## WHAT ARE THE VOCATIONAL SUBJECTS IN FINANCE, ECONOMICS AND ACCOUNTING?

The vocational subjects in Finance, Economics and Accounting include:

- Applied Accounting
- Economics Environment
- Financial Management
- New Venture Creation

## CAREER OPPORTUNITIES

- Private and Public Accounting
- Financial Services
- Insurance Services
- Investment Services
- Bookkeeping

## OFFERED AT

- Maluti
- Mount Frere
- Ngqungqushu



## WHAT IS THE NATIONAL CERTIFICATE MANAGEMENT PROGRAMME?

The National Certificate Management is a programme at each of level 2, 3 and 4 of the NQF. This programme is designed to provide both the theory and of management. The practical component of the study may be offered in real workplace or in a simulated workplace environment. It will provide student with an opportunity to experience work situation during the period of study.

## WHAT ARE THE MINIMUM ENTRY REQUIREMENTS TO THE PROGRAMME?

For entry in to the National Certificate Management at NQF level 2, you require:

- A year end school report for grade 9, 10, 11 and 12 certificate; or
- An NQF Level 1 qualification; or
- An approval bridging Programme designed for the purpose to access NQF Level 2; or
- A Recognition of prior learning (RPL) assessment to meet the basic requirements for access to NQF Level 2.

## HOW LONG IS THE QUALIFICATION?

The National Certificate Management programme is a full year program at each of the NQF levels of study. A student is issued with a certificate on the successful completion of each level of study that is Level 2, 3 and 4.

## WHICH SUBJECTS MAKE UP A NATIONAL CERTIFICATE MANAGEMENT?

In order to obtain a National Certificate Management, a student is required to a total of 7 subjects. These include 3 fundamental subjects and 4 vocational subjects.

Which are the fundamental subjects?

The fundamental subjects are:

- First additional language-which must be the language of teaching and learning;
- Mathematics or Mathematical literacy; and
- Life Orientation

## WHAT ARE THE VOCATIONAL SUBJECTS IN MANAGEMENT?

The 4 vocational subjects in management are:

- Management Practice
- Operations Management
- Financial Management
- Entrepreneurship and Project Management

## CAREER OPPORTUNITIES

- Human Resources Management
- Marketing
- Financial Management
- Public Relations
- Production
- Office Management

## OFFERED AT

- Siteo



## WHAT IS THE NATIONAL CERTIFICATE MARKETING PROGRAMME?

The National Certificate Marketing is a programme at each of level 2, 3, and 4 of the NQF. This programme is designed to provide both the theory and practice of Marketing. The practical component of the study may be offered in the workplace or in a stimulated workplace environment. It will provide student with with an opportunity to experience work situations during the period of study.

## WHAT ARE THE MINIMUM ENTRY REQUIREMENTS TO THE PROGRAMME?

For entry in to the National Certificate Marketing at NQF Level 2, you require:

- A year end school report for Grade 9, 10, 11 or 12 Certificate; or
- An NQF Level 1 qualification; or
- An approved bridging programme designed for the specific purpose to access NQF Level 2; or
- A recognition of Prior Learning (RPL) assessments to meet the basic requirements for access to NQF Level 2.

## HOW LONG IS THE QUALIFICATION?

The National Certificate Marketing programme is a full year programme at each of the NQF levels of study. A student is issued with a certificate on the successful completion of each of the NQF study that is level 2, Level 3, and 4.

## WHICH SUBJECTS MAKE UP A NATIONAL CERTIFICATE MARKETING?

In order to obtain a National Certificate Marketing, a student is required to take a total of 7 subjects. These include 3 fundamental subjects and 4 vocational subjects.

## WHICH ARE THE FUNDAMENTAL SUBJECTS?

The fundamental subjects?

- First additional language- which must be the language of teaching and learning;
- Mathematics or Mathematical Literacy; and
- Life Orientation

## WHAT ARE THE VOCATIONAL SUBJECTS IN MARKETING?

The vocational subjects in Marketing are:

- Advertising and Promotion
- Marketing
- Marketing Communication
- Consumer Behavior
- Contact Centre Operations

## CAREER OPPORTUNITIES

- Market products
- Sell goods and Services
- Market Research
- Advertising

## OFFERED AT

- Maluti
- Mount Frere



## WHAT IS THE NATIONAL CERTIFICATE OFFICE ADMINISTRATION PROGRAMME?

The National Certificate Office Administration is a programme at each of Level 2, 3 and 4 of the NQF. This programme is designed to provide both the theory and practice of Office Administration. The practical component of the study may be offered in the workplace or in a simulated workplace environment. It will provide student with an opportunity to experience work situation during the period of study.

What are the minimum entry requirements to the programme?

For entry in to the National Certificate Office Administration at NQF level 2, you require:

- A year end school report for Grade 9, 10, 11 and 12 Certificate; or
- An NQF level 1 qualification; or
- An approved bridging programme designed for the specific purpose to access NQF level 2; or
- A Recognition of Prior Learning (RPL) assessment to meet basic requirements for access to NQF Level 2.

## HOW LONG IS THE PROGRAMME?

The National Certificate Office Administration programme is a full year programme at each of the NQF level of study. A student is issued with a certificate on the successful completion of each level of study that is level 2, 3 and 4.

## WHICH SUBJECTS MAKE UP A NATIONAL CERTIFICATE OFFICE ADMINISTRATION?

In order to obtain a National Certificate Office Administration, a student is required to take a total of 7 subjects. This include 3 fundamental subjects and 4 vocational subjects.

## WHICH ARE THE FUNDAMENTAL SUBJECTS?

The fundamental subjects are:

- First additional language –which must be the language of teaching and learning;
- Mathematics or Mathematical Literacy; and
- Life Orientation

## WHAT ARE THE VOCATIONAL SUBJECTS IN OFFICE ADMINISTRATION?

The vocational subjects in Office Administration are:

- Business Practice
- Office Practice
- Office Data Processing
- Applied Accounting or 2nd Language or Personal Assistance or New Venture Creation.

## CAREER OPPORTUNITIES

- Receptionist
- Personal Assistant
- Secretary
- Company Secretary
- Front Office Assistance

## OFFERED AT

- Maluti
- Mount Frere
- Mount Fletcher
- Ngqungqushu
- Site to

“THE PRACTICAL COMPONENT OF STUDY MAY BE OFFERED IN A REAL WORKPLACE OR IN A SIMULATED WORKPLACE ENVIRONMENT.”

## WHAT IS THE NATIONAL CERTIFICATE TRANSPORT AND LOGISTICS PROGRAMME?

The National Certificate Transport and Logistics is a programme at each of Level 2, 3 and 4 of the NQF. This programme is designed to provide both the theory and practice of Transport and Logistics. The practical component of the study may be offered in the workplace or in a stimulated workplace environment. It will provide student with an opportunity to experience work situation during the period of study.

## WHAT ARE THE MINIMUM ENTRY REQUIREMENTS TO THE PROGRAMME?

For entry in to the National Certificate Transport and Logistics at NQF Level 2, you require:

- A year end school report for Grade 9, 10, 11 or 12 Certificate; or
- An NQF Level 1 qualification; or
- An approved bridging programme designed for the specific purpose to access NQF Level 2; or
- A recognition of Prior Learning (RPL) assessments to meet the basic requirements for access to NQF Level 2.

## HOW LONG IS THE QUALIFICATION?

The National Certificate Transport and Logistics is a full year programme at each of the NQF level of study. A student is issued with a certificate on the successful completion of each level of study that is level 2, 3 and 4.

## WHICH SUBJECTS MAKE UP A NATIONAL CERTIFICATE TRANSPORT AND LOGISTICS?

In order to obtain a National Certificate Transport and Logistics, a student is required to take a total of 7 subjects. This include 3 fundamental subjects and 4 vocational subjects.

## WHICH ARE THE FUNDAMENTAL SUBJECTS?

The fundamental subjects?

- First additional language- which must be the language of teaching and learning;
- Mathematics or Mathematical Literacy; and
- Life Orientation

## WHAT ARE THE VOCATIONAL SUBJECTS IN TRANSPORT AND LOGISTICS?

The vocational subjects in Transport and Logistics are:

- Freight Logistics
- Transport Economics
- Transport Operations
- Entrepreneurship
- Project Management

## CAREER OPPORTUNITIES

- Air cabin crew
- Freight Forwarder
- Air Traffic Controller
- Logistics and Distribution Manager
- Transport Manager
- Transport Planner

## OFFERED AT

- Mount Frere



# INTRODUCING REPORT

# 191

# PROGRAMMES

With the introduction of the National Certificate Vocational NC (V), in 2007, the phasing out of NATED Courses commenced. This resulted in N1-N3 qualifications being phased out in public TVET colleges for all engineering, business and services programmes.

However, Engineering, business and service programmes N4 to N6 have been extended by the Department of Higher Education and Training (DHET) until such time that the DHET issues a gazette on its phase out.

## SUBJECT REQUIRMENT AND DURATION OF THE COURSES

In the case of engineering studies, each level requires three subjects and run for 10 weeks/trimester duration. In Business and Service-related programmes each level requires four subjects and it is for six months/semester for engineering programmes, and every semester for business and service programmes.

### THE MINIMUM ENTRY REQUIREMENTS FOR THE REPORT 191 COURSES

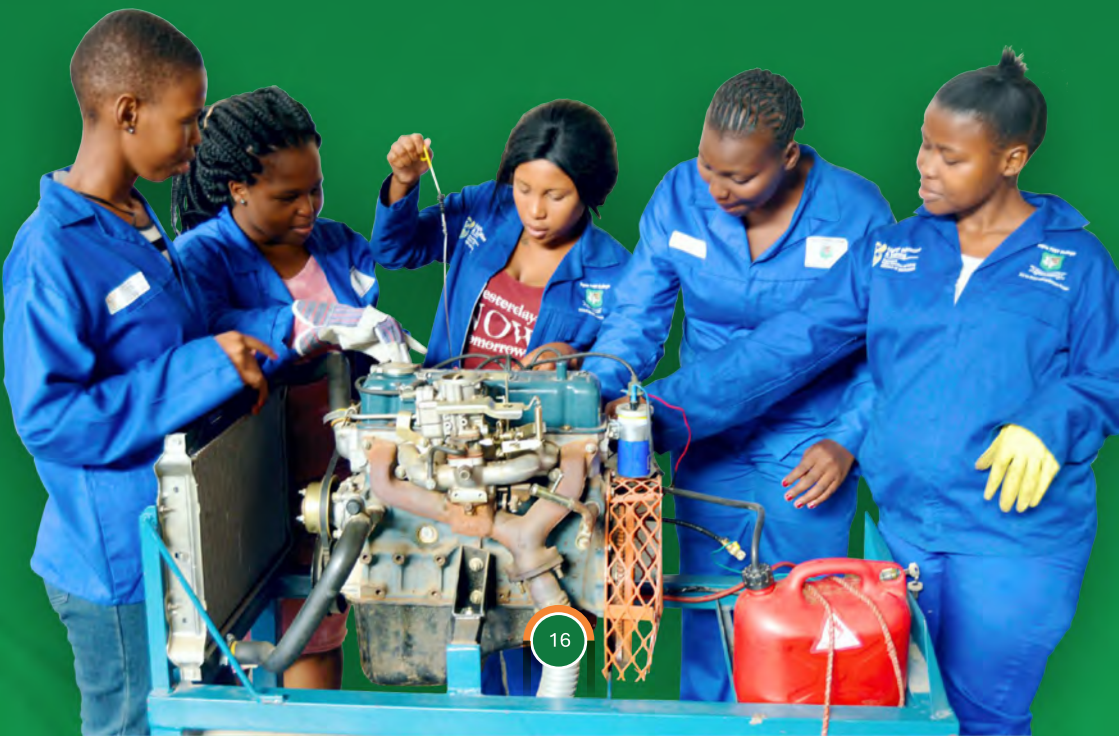
- To enroll for the N4 Certificate, student needs to have an N3 Certificate or a Grade 12 Certificate.
- 
- To enroll for N5, students need to have N4 Certificate and an N5 certificate to be considered for enrolment into N6.

TO ENROLL IN	PREREQUISITE (YOU NEED)
N4	N3 or Grade 12
N5	N4
N6	N5



# R191

## ENGINEERING PROGRAMMES



## WHAT IS THE NATIONAL N CERTIFICATE CIVIL ENGINEERING PROGRAMME?

The National N Certificate Civil Engineering is a programme offered at N4 – N6. This programme is designed to provide both the theory and practice of Civil Engineering. The practical component of the study may be offered in the workplace or in a stimulated workplace environment. It will provide student with an opportunity to experience work situation during the period of study.

## WHAT ARE THE MINIMUM ENTRY REQUIREMENTS TO THE PROGRAMME?

For entry to Civil Engineering N4 you require

- N3 or
- Grade 12
- Equivalent qualification
- A Recognition of Prior Learning (RPL) assessment to meet basic requirements for access to N3

## HOW LONG IS THE PROGRAMME?

It is a full time 03 months programme at each of the Nated (N). A student is issued with a certificate on the successful completion of each Nated (N) of study that is N4, N5 and N6.

## WHICH SUBJECTS MAKE UP CIVIL ENGINEERING?

In order to obtain a N4 – N6 certificate a student is required to take a total of 4 subjects

- Mathematics
- Building and Structural Construction
- Building and Structural Surveying
- Building Administration
- Building and Civil Technology

## CAREER OPPORTUNITIES

- Architectural Technology
- Drainage Inspection
- Industrial Engineering
- Quantity Surveying
- Sanitation and Reticulation
- Roads Construction
- Building Construction

## OFFERED AT

- Ngqungqushu
- Siteto



## WHAT IS THE NATIONAL N CERTIFICATE ELECTRICAL ENGINEERING PROGRAMME?

The National N Certificate Electrical Engineering is a programme offered at N4 – N6. This programme is designed to provide both the theory and practice of Electrical Engineering. The practical component of the study may be offered in the workplace or in a stimulated workplace environment. It will provide student with an opportunity to experience work situation during the period of study.

## WHAT ARE THE MINIMUM ENTRY REQUIREMENTS TO THE PROGRAMME?

For Entry To Electrical Engineering N3 You Require

- N3 Certificate or
- Grade 12 or
- NCV Level 4
- Equivalent qualification
- A Recognition of Prior Learning (RPL) assessment to meet basic requirements for access to N4

## HOW LONG IS THE PROGRAMME?

It is a full time 03 months programme at each of the Nated (N). A student is issued with a certificate on the successful completion of each Nated (N) of study that is N4, N5 and N6.

## WHICH SUBJECTS MAKE UP ELECTRICAL ENGINEERING?

In order to obtain a N4 – N6 certificate a student is required to take a total of 4 subjects

- Mathematics
- Engineering Science
- Industrial Electronics
- Mechano technology

## CAREER OPPORTUNITIES

- Electrical Engineering
- Industrial Engineering
- Sound Technology
- Theatre Technology
- Digital Electronics

## OFFERED AT

- Ngqungqushu
- Siteto



## WHAT IS THE NATIONAL N CERTIFICATE MECHANICAL ENGINEERING PROGRAMME?

The National N Certificate Mechanical Engineering is a programme offered at N4 – N6. This programme is designed to provide both the theory and practice of Mechanical Engineering. The practical component of the study may be offered in the workplace or in a stimulated workplace environment. It will provide student with an opportunity to experience work situation during the period of study.

## WHAT ARE THE MINIMUM ENTRY REQUIREMENTS TO THE PROGRAMME?

For entry to Mechanical Engineering N4 you require

- N3 Certificate or
- Grade 12
- NCV Level 4
- Equivalent qualification
- A Recognition of Prior Learning (RPL) assessment to meet basic requirements for access to N4

## HOW LONG IS THE PROGRAMME?

It is a full time 03 months programme at each of the Nated (N). A student is issued with a certificate on the successful completion of each Nated (N) of study that is N4, N5 and N6.

## WHICH SUBJECTS MAKE UP MECHANICAL ENGINEERING?

In order to obtain a N4 – N6 certificate a student is required to take a total of 4 subjects

- Mathematics
- Engineering Science
- Engineering Drawing
- Mechano technology

## CAREER OPPORTUNITIES

- Automotive Repairing
- Motor Mechanics
- Refrigeration

## OFFERED AT

- Mount Frere
- Ngqungqushu



# R191

**BUSINESS STUDIES**  
PROGRAMMES



## NATIONAL N CERTIFICATE BUSINESS MANAGEMENT

### WHAT ARE THE MINIMUM ENTRY REQUIREMENTS?

For entry to Business Management N4-N6, you require:

- Grade 12 certificate; or
- Equivalent qualification

### WHICH SUBJECTS MAKE UP BUSINESS MANAGEMENT?

In order to obtain a Nated National Certificate (Business Management), a student is required to take the following subjects.

- Introductory Accounting N4
- Management Communication N4
- Financial Accounting N4 and N5
- Sales Management N5 and N6
- Computer Practice N4, N5 and N6
- Entrepreneurship and Business Management N4, N5 and N6

### HOW LONG IS THE QUALIFICATION?

It's a full part time six (06) months programme at each of the Nated (N). A student is issued with a certificate on the successful completion of each Nated (N) of study that is N4, 5 and N6.

### WHAT CAREER OPPORTUNITIES DO I HAVE AFTER COMPLETING?

The Nated National Certificate (Business Management) provides an opportunity to access careers in any of the sectors listed below:

- Finance Management
- Marketing
- Human Resources
- Public Relations
- Production
- Office Administration

### OFFERED AT:

- Maluti
- Mount Fletcher
- Mount Frere
- Ngqungqushu
- Siteto

## NATIONAL N CERTIFICATE FARMING MANAGEMENT

### WHAT ARE THE MINIMUM ENTRY REQUIREMENTS?

For entry to Financial Management, you require

- Grade 12 Certificate; or
- Equivalent qualification

### WHICH SUBJECTS MAKE UP A FARMING MANAGEMENT QUALIFICATION?

In order to obtain a Nated National Certificate in Farming Management a student is required to complete the following subjects:

- Management N4, N5 and N6
- Data Management N4, N5 and N6
- Financial Management N4, N5
- Maintenance Management N4, N5

### HOW LONG IS THE QUALIFICATION?

It's a full or part time six (6) months programme at each of the Nated (N). A student is issued with a certificate on the successful completion of each Nated (N) of study, that is N4, 5 and N6

### WHAT CAREER OPPORTUNITIES DO I HAVE AFTER COMPLETING?

The NATED national certificate (farming management) provides an opportunity to access careers in any of the sectors listed below:

- Farm Manager
- Farmer
- Assistant Farmer
- Farm Supervisor
- Agricultural Products Representative

### OFFERED AT

- Maluti Campus



## WHAT ARE THE MINIMUM ENTRY REQUIREMENTS?

For entry to Financial Management, you require

- Grade 12 Certificate; or
- Equivalent qualification

## WHICH SUBJECTS MAKE UP A BUSINESS MANAGEMENT?

In order to obtain a Nated National Certificate (Financial Management), a student is required to take the following subjects.

- Management Communication N4
- Cost and Management Accounting N5 and N6
- Computerised Financial System N4, N5 and N6
- Financial Accounting N4, N5 and N6
- Entrepreneurship and Business Management N4, N5 and N6

## HOW LONG IS THE QUALIFICATION?

It's a full or part time six (6) months programme at each of the Nated (N). A student is issued with a certificate on the successful completion of each Nated (N) of study, that is N4, 5 and N6.

## WHAT CAREER OPPORTUNITIES DO I HAVE AFTER COMPLETING?

The Nated National Certificate (Financial Management) provides an opportunity to access careers in any of the sectors listed below:

- Private and Public Accounting
- Banking
- Financial Services
- Insurance Services
- Investment Services
- Bookkeeping

## OFFERED AT:

- Maluti
- Mount Frere

## WHAT ARE THE MINIMUM ENTRY REQUIREMENTS?

For entry to Human Resource, you require:

- Grade 12 Certificate; or
- Equivalent qualification

## WHICH SUBJECTS MAKE UP A HUMAN RESOURCE?

In order to obtain a Nated National Certificate (Human Resource), a student is required to take the following subjects.

- Entrepreneurship Management N4
- Management Communication N4
- Labour Relations N5 and N6
- Personal Training N5 and N6
- Computer Practice N4, N5 and N6
- Personal Management N4, N5 and N6

## HOW LONG IS THE QUALIFICATION?

It's a full or part time six (06) months programme at each of the Nated (N). A student is issued with a certificate on the successful completion of each Nated (N) of study, that is N4, 5, and 6

## WHAT CAREER OPPORTUNITIES DO I HAVE AFTER COMPLETING?

It provides an opportunity to access careers in any of the sectors listed below:

- Public Sector (Government Department)
- Private Sector (Companies)
- Parastatal
- Government Agencies
- Consultancy Services
- Mining Industries

## OFFERED AT

- Maluti Campus
- Mount Frere Campus

## NATIONAL N CERTIFICATE MANAGEMENT ASSISTANT

### WHAT ARE THE MINIMUM ENTRY REQUIREMENTS?

For entry to Management assistant, you require:

- Grade 12 Certificate; or
- Equivalent qualification

### WHICH SUBJECTS MAKE UP MANAGEMENT ASSISTANT?

In order to obtain a Nated National Certificate (Management Assistant), a student is required to take the following subjects.

- Information Processing N4, N5 and N6
- Computer Practice N4, N5 and N6
- Communication N4, N5 and N6
- Office Practice N4, N5 and N6

### HOW LONG IS THE QUALIFICATION?

It's a full or part time six (06) months at each of the Nated (N). A student is issued with a certificate on the successful completion of each Nated (N) of study that is N4, 5 and N6.

### WHAT CAREER OPPORTUNITIES DO I HAVE AFTER COMPLETING?

The Nated National Certificate (Management Assistant) provides an opportunity to access careers in any of the sectors listed below:

- Accounting and Bookkeeping
- Office Management
- Freight Forwarder
- Human Resource Management
- Personnel Management
- Private Secretary
- Front Line Reception
- Legal Secretarial Services
- Self Employment
- Personal and General Secretarial Services

### OFFERED AT

- Maluti Campus
- Mount Frere Campus
- Siteto Campus
- Ngqungqushu campus

## NATIONAL N CERTIFICATE MARKETING MANAGEMENT

### WHAT ARE THE MINIMUM ENTRY REQUIREMENTS?

For entry to Marketing Management N4-N6, you require:

- Grade 12 certificate; or
- Equivalent qualification

### WHICH SUBJECTS MAKE UP A MARKETING MANAGEMENT QUALIFICATION?

In order to obtain a Nated National Certificate (Marketing Management), a student is required to take the following subjects.

- Marketing Management N4, N5 and N6
- Management Communication N4
- Computer Practice N4
- Entrepreneurship and Business Management N4 and N5
- Sales Management N6
- Marketing Research N6

### HOW LONG IS THE QUALIFICATION?

It's a full part time six (06) months programme at each of the Nated (N). A student is issued with a certificate on the successful completion of each Nated (N) of study that is N4, 5 and N6.

### WHAT CAREER OPPORTUNITIES DO I HAVE AFTER COMPLETING?

The Nated National Certificate (Marketing Management) provides an opportunity to access careers in any of the sectors listed below:

- Marketing Management
- Public Relations
- Production
- Advertising
- Sales

### OFFERED AT

- Mount Frere Campus
- Maluti Campus

## NATIONAL N CERTIFICATE PUBLIC MANAGEMENT

### WHAT ARE THE MINIMUM ENTRY REQUIREMENTS?

For entry to Public Management N4-N6, you require:

- Grade 12 certificate; or
- Equivalent qualification

### WHICH SUBJECTS MAKE UP A PUBLIC MANAGEMENT?

In order to obtain a Nated National Certificate (Public Management), a student is required to take the following subjects.

- Public Management N4 – N6
- Public Administration N4 – N6
- Public Finance N4 - N6
- Public Law N4 and N6
- Management Communications N4 – N6

### HOW LONG IS THE QUALIFICATION?

It's a full part time six (06) months programme at each of the Nated (N). A student is issued with a certificate on the successful completion of each Nated (N) of study that is N4, 5 and N6.

### WHAT CAREER OPPORTUNITIES DO I HAVE AFTER COMPLETING?

The Nated National Certificate (Public Management) provides an opportunity to access careers in any of the sectors listed below:

- Finance Management
- Marketing
- Human Resources
- Public Relations
- Production
- Office Administration

### OFFERED AT

- Ngqungqusho Campus
- Mount Fletcher Campus

## NATIONAL N CERTIFICATE LEGAL SECRETARY

### WHAT ARE THE MINIMUM ENTRY REQUIREMENTS?

For entry to Legal Secretary N4-N6, you require:

- Grade 12 certificate; or
- Equivalent qualification

### WHICH SUBJECTS MAKE UP A LEGAL SECRETARY QUALIFICATION?

In order to obtain a Nated National Certificate (Legal Secretary), a student is required to take the following subjects.

- Communications N4 – N6
- Office Practice N4 – N6
- Information Processing N4 and N5
- Information Accounting N4
- Legal Practice N5 – N6
- Information Processing N5 – N6

### HOW LONG IS THE QUALIFICATION?

It's a full part time six (06) months programme at each of the Nated (N). A student is issued with a certificate on the successful completion of each Nated (N) of study that is N4, 5 and N6.

### WHAT CAREER OPPORTUNITIES DO I HAVE AFTER COMPLETING?

The Nated National Certificate (Legal Secretary) provides an opportunity to access careers in any of the sectors listed below:

- Conveyancing Secretary
- Litigation Secretary
- Paralegal Secretary
- Executive Personal Assistant

### OFFERED AT

- Mount Fletcher Campus



# OCCUPATIONAL PROGRAMMES

## 01 NATIONAL CERTIFICATE HAIRDRESSING

### ACCREDITATION

Services Seta

### DURATION

2 years full time plus one year training in a salon

### ADMISSION REQUIREMENTS

Grade 9 - 12

### PROGRAMME CONTENT

Hairdressing services  
Salon support services  
Numeracy/ Mathematical Literacy  
Salon Administration Services  
Communication Studies

### CAREER OPPORTUNITIES

Hair stylist  
Salon owner  
Hair care technician

# MINIMUM REQUIREMENTS TO QUALIFY FOR A NATIONAL N DIPLOMA

**BUSINESS STUDIES** After completing the N6 Certificate (which requires 18 months to complete) student have to complete a further 18 months or 2000 hours of relevant practical experience in their area of study to obtain National N Diploma.

**ENGINEERING STUDIES** After completing N4-N6 Certificate (which requires 1 year to complete) student have to complete a further 2 years of relevant practical experience to obtain a National N Diploma.

## FINANCIAL ASSISTANCE

Lack of funding should not be the reason that academically capable young people of South Africa cannot access cannot post-school education and and training. The Department of Higher Education and Trainings TVET College bursary scheme aims to assist young people wishing to access post-school learning opportunities at colleges.

The bursary application process is administered and managed by the National skills financial Aid Scheme (NSFAS) through the centralized system. Student may lodge their application online . The application process usually open from September of each year proceeding the study year. Students can contract their nearest TVET College for further information. It is important to note that NSFAS makes the final decision to grant or reject an application

**Funding for TVET College students is not only limited to**

**NSFAS. Funding from other institutions like SETAS, Government Departments and Private Institutions can also be available for students. Students should enquire at Financial Aid offices about other available funding opportunities.**

Everyone has the right to further education, which the government must make available and accessible, and the printing of this pamphlet will be one way of making the public aware of opportunities for disabled people in TVET Colleges. This will also promote access by disabled people.

Students are not expected to repay the bursary but do have an obligation to perform well in their studies and progress to the next level of study.

**It should however be noted that, should a student fail a certain number of subjects as prescribed by the individual college, the bursary will be withdrawn and the student will not be eligible for further financial aid. If he/she repeats the level and passes, he/she may reapply for a bursary.**

- To qualify for a bursary a student need to be:
- A South African citizen
- Enrolled or intending to enroll for the NC(V) or Report 191 Programmes at any of the 50 public TVET Colleges in South Africa ;
- In need of a financial assistance; and
- Able to demonstrate potential for academic success



# Ingwe TVET College



## CONTACT US



039 940 2142



Ingwe TVET College



[info@ingwecollege.edu.za](mailto:info@ingwecollege.edu.za)



[ingwecollege](https://www.instagram.com/ingwecollege)



[www.ingwecollege.edu.za](http://www.ingwecollege.edu.za)



[ingwe.tvet.colleg2](https://www.youtube.com/channel/UCgweTVETcolleg2)

### Administration Centre

Badibanise Location  
KwaBhaca  
039 940 2142

### Mount Fletcher

Hospital Area  
Tlokoeng  
039 940 2142 Ext 600

### Ngqungqushe

Magwa Road  
Lusikisiki  
039 940 2142 Ext 300

### Maluti

Mli Road  
Maluti  
039 940 2142 Ext 500

### Mount Frere

Cancele Road  
KwaBhaca  
039 940 2142 Ext 200

### Siteto

Mhlanga Location  
Bizana 039 940 2142 Ext 400